

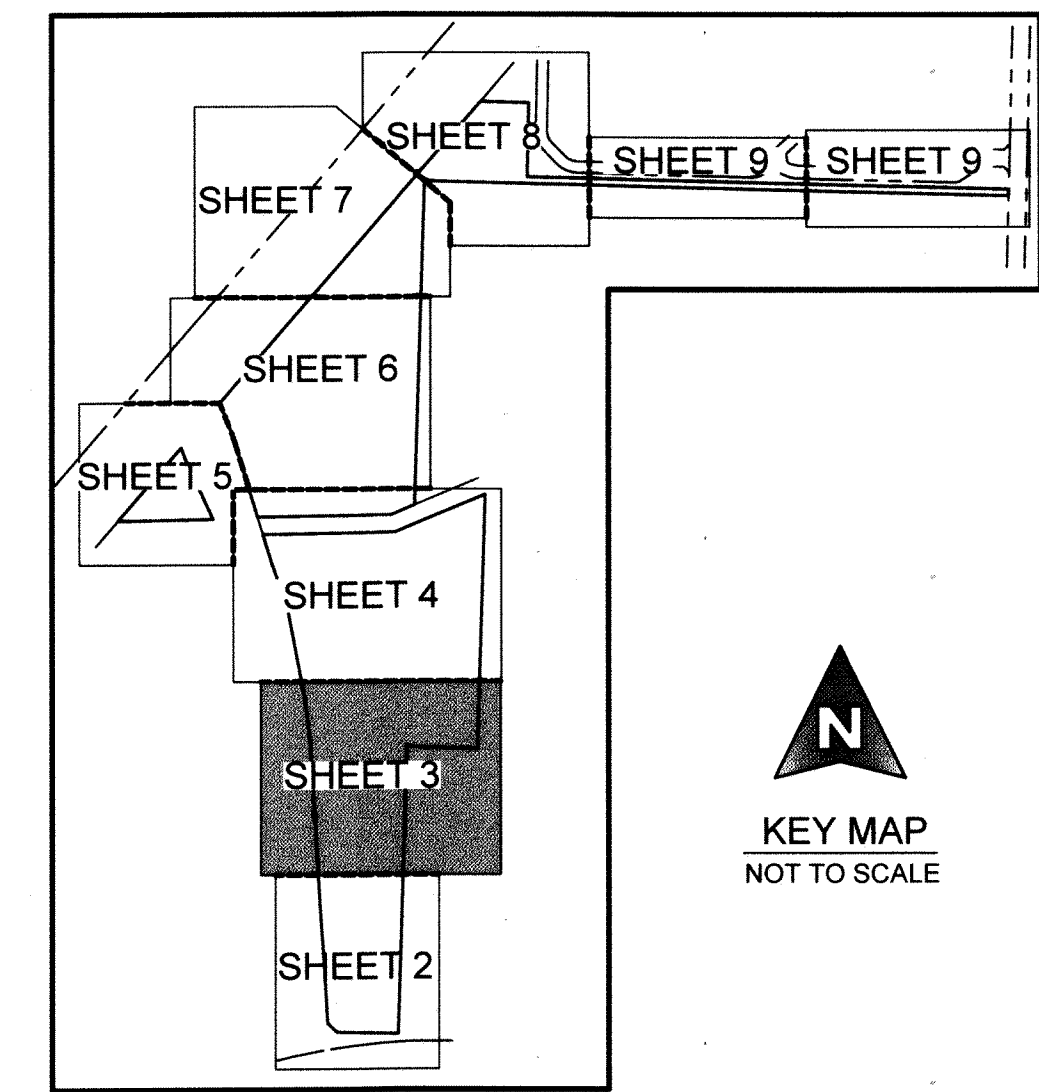
THIS INSTRUMENT WAS PREPARED BY LESLIE C. BISPOTT, P.S.M. AND CRAIG S. PUSEY, P.S.M. OF MICHAEL B. SCHORAH AND ASSOCIATES, INC., 1850 FOREST HILL BOULEVARD, SUITE 206, WEST PALM BEACH, FLORIDA, 33406.

COORDINATES NOTE:

STATE PLANE COORDINATES SHOWN ARE GRID DATUM, NAD 83, 1990 ADJUSTMENT, TRANSVERSE MERCATOR PROJECTION, FLORIDA EAST ZONE.
 LINEAR UNIT = US SURVEY FEET
 ALL DISTANCES ARE GROUND (UNLESS OTHERWISE SHOWN)
 SCALE FACTOR = 1.0000307
 GROUND DISTANCE X SCALE FACTOR = GRID DISTANCE
 ALL BEARINGS SHOWN HEREON ARE GRID NORTH AMERICAN DATUM 1983/1990 ADJUSTMENT

WATER TREATMENT PLANT NO. 8

LYING IN SECTION 27, TOWNSHIP 43 SOUTH, RANGE 42 EAST, PALM BEACH COUNTY, FLORIDA, SAID PARCELS OF LAND BEING A PORTION OF THE AFFIDAVIT OF WAIVER AS RECORDED IN OFFICIAL RECORDS BOOK 23676, PAGE 239, BEING A RE-PLAT OF PORTIONS OF TRACTS 1, 5, 6, 7, 12, 13 AND 20, BLOCK 4, PALM BEACH FARMS COMPANY PLAT NO. 3, AS RECORDED IN PLAT BOOK 2, PAGE 45, ALL OF THE PUBLIC RECORDS OF PALM BEACH COUNTY, FLORIDA.



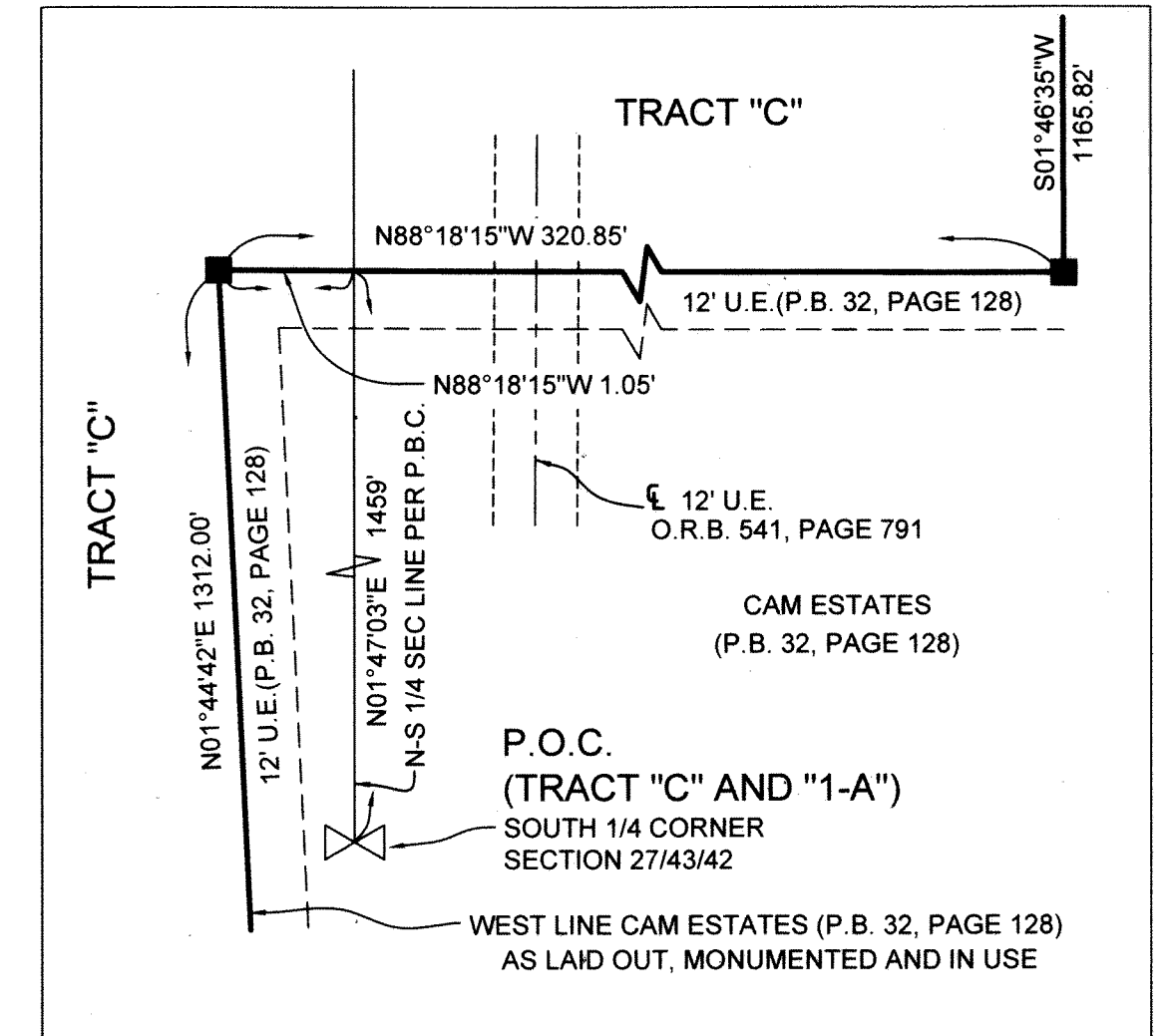
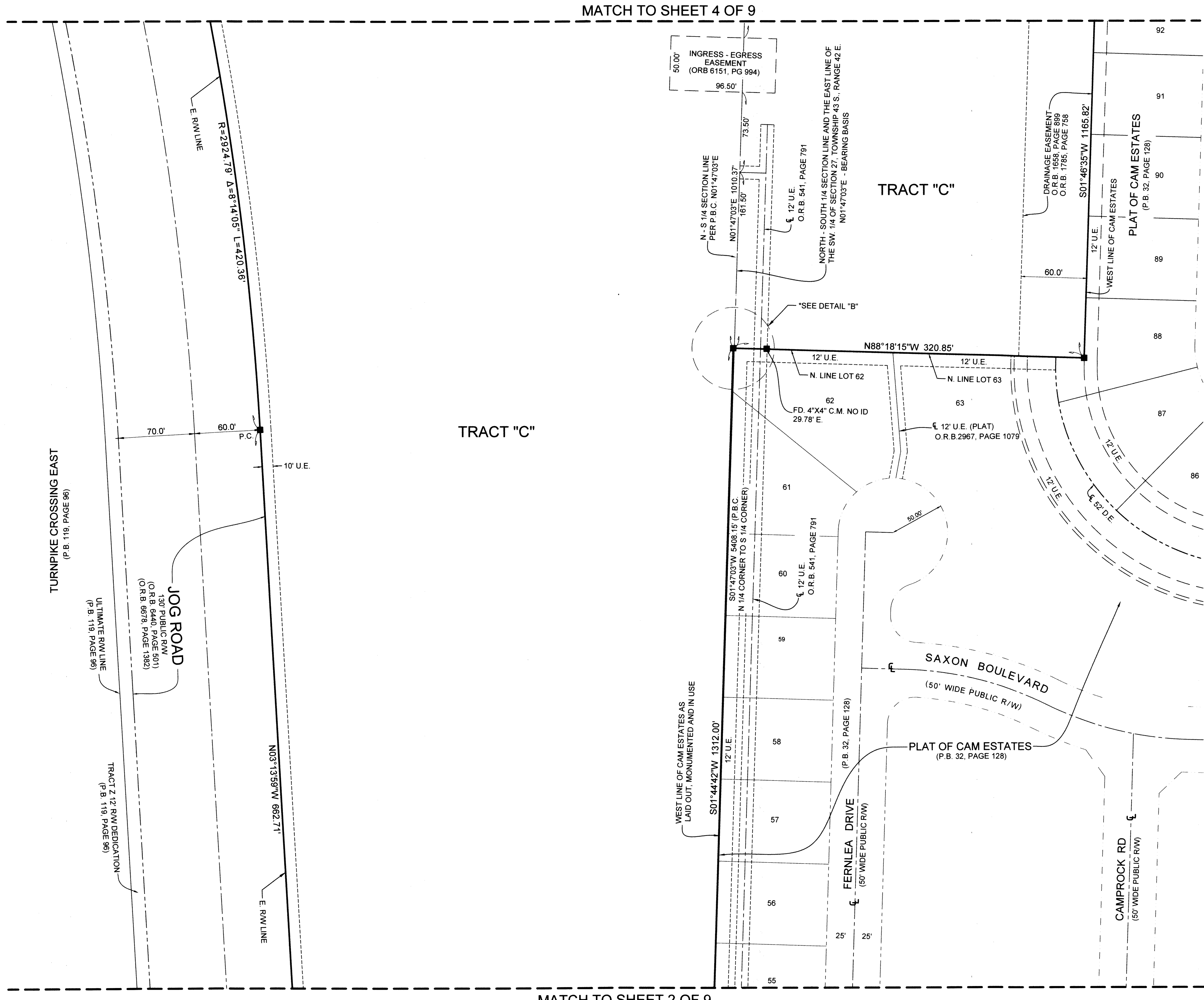
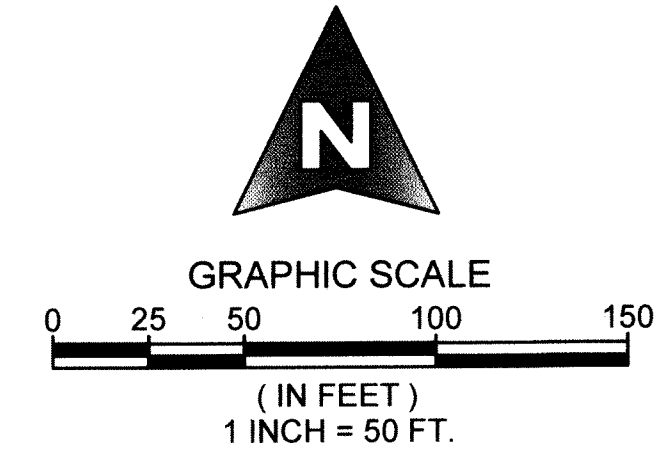
131



KEY MAP
NOT TO SCALE

LEGEND

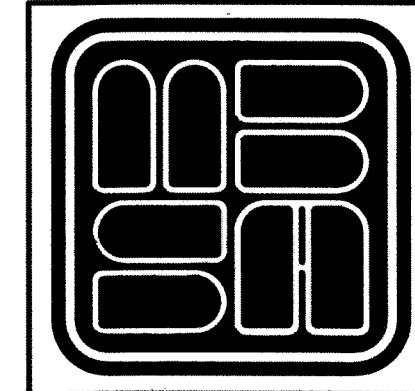
- P.R.M. = PERMANENT REFERENCE MONUMENT
- O.R.B. = OFFICIAL RECORD BOOK
- P.B. = PLAT BOOK
- D.B. = DEED BOOK
- R.P.B. = ROAD PLAT BOOK
- P.B.C. = PALM BEACH COUNTY
- R.W. = RIGHT OF WAY
- CL = CENTERLINE
- U.E. = UTILITY EASEMENT
- D.E. = DRAINAGE EASEMENT
- R = RADIUS
- L = ARC LENGTH
- CA = CURVE CENTRAL ANGLE
- ⊙ = DENOTES FOUND PALM BEACH COUNTY CONTROL STATION
- = SET 4"x4"x24" C.M. WITH ALUMINUM DISK, STAMPED P.R.M. L.B. 2438
- = DENOTES FOUND P.R.M. (AS SHOWN)
- ⊙ = SET MAG NAIL AND 1 1/4" BRASS WASHER STAMPED PRM LB 2438
- ⊕ = PALM BEACH COUNTY SECTION CORNER (AS SHOWN)
- ⊕ = PALM BEACH COUNTY QUARTER (1/4) SECTION CORNER (AS SHOWN)
- N = NOTHING, WHEN USED WITH COORDINATES
- E = EASTING, WHEN USED WITH COORDINATES
- L.A.E. = LIMITED ACCESS EASEMENT
- L.S.E. = LIFT STATION EASEMENT
- N.T. = NON-TANGENT CURVE
- OA = OVERALL
- C.M. = CONCRETE MONUMENT
- NO. = NUMBER
- F.D. = FOUND
- S.F. = SQUARE FEET
- LWDD = LAKE WORTH DRAINAGE DISTRICT
- MCC = MINUTES CIRCUIT COURT BOOKS
- 27/43/42 = SECTION 27, TOWNSHIP 43 SOUTH, RANGE 42 EAST
- P.C. = POINT OF CURVATURE
- P.O.C. = POINT OF COMMENCEMENT
- P.O.B. = POINT OF BEGINNING
- B.E. = BUFFER EASEMENT



DETAIL "B"
(NOT TO SCALE)

MATCH TO SHEET 2 OF 9

MATCH TO SHEET 4 OF 9



MICHAEL B. SCHORAH & ASSOCIATES, INC.
 1850 FOREST HILL BLVD., SUITE 206
 WEST PALM BEACH, FLORIDA 33406
 EB# 2438 TEL. (561) 968-0080 FAX. (561) 642-9726 LB# 2438